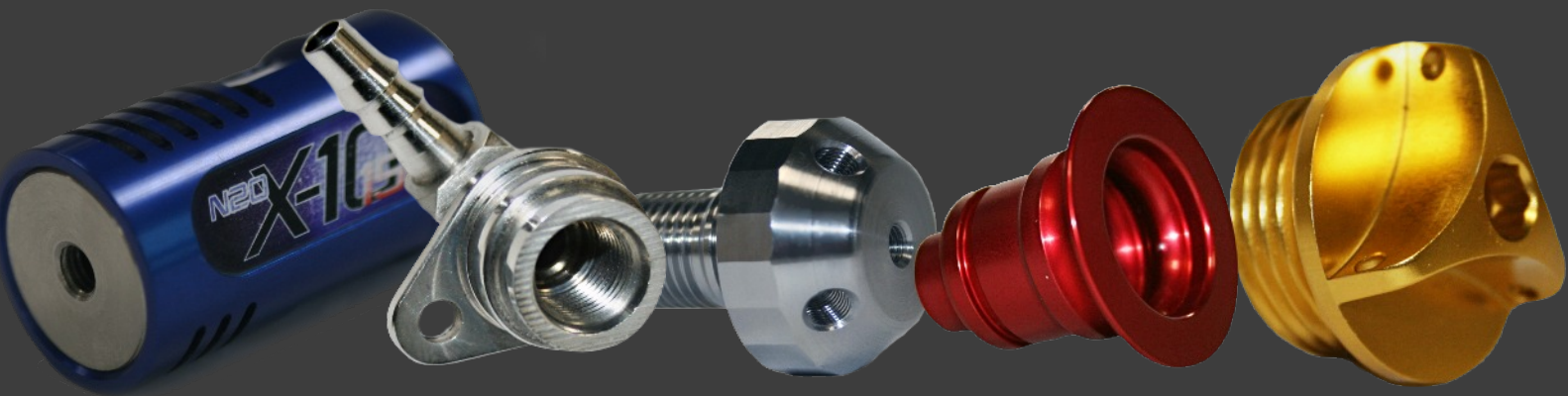


ROTEC

CAPACITY LIST



www.rottec-ltd.com

Rotec has 12 fully automated sliding head machines that operate 24/7 and we are continually investing in the latest Multi-Axis technology. All our high quality parts are manufactured to the customer's specifications. CAD Design, CAD/Cam and Rapid Proto-typing are just some of the additional services we provide, along with our extensive sliding head section, our plant includes CNC turning and milling. With up to 5 axis milling, we aim to cater for all your manufacturing requirements.

The Future

Rotec Engineering has grown considerably over recent years, with heavy investment in the latest machines and £8 million total investment. Due to the expansion and success of Rotec we moved to a state of the art purpose built Advanced Manufacturing Centre in 2017.



"Since the dawn of time man has striven to create, design and build ever more innovative machines. From the invention of the wheel, around the 4th millennia BC, to the Industrial Revolution of 19th Century Britain and through to today's incredible computerised machines, engineering continues to move forward into previously unknown realm Engineering has seen outstanding advances in the last century, Frank Whitstles development of the jet engine in the 1930's revolutionised air travel and we now regularly send astronauts into space. All of this can be attributed to the creative genius employed by the modern day engineer."

Here at Rotec we hold a firm belief in the future of British engineering. As a company we are obligated to remain at the forefront of manufacturing technology and invest in continued R&D in order to maintain our competitive edge over global competition.

We also have a passionate belief in the 'spirit of engineering' which is inherent, but often unrecognised, for many young people in today's curriculum. As such, our apprentice programme is a great success and we believe that with the correct education and discipline we can inspire our students to discover the true meaning of the word engineer - ingenious man."

- Paul Butler, MD

Capability - Material

THE WIDE RANGE OF MATERIAL WE WORK WITH:

- Aluminium
- Steel
- Aluminium Bronze
- Titanium
- Copper
- Brass
- Stainless Steel
- Standard Duplex Stainless Steel
- Super Duplex Stainless Steel
- Martensitic Stainless Steel
- ASTM
- Non Ferrous
- Carborn alloy Duplex & Superduplex
- Plastics Heat Resistant
- Inconel
- Monel

These are just some of the materials we use.



PLATING

Rotec has a network of excellent subcontractors enabling us to offer a full range of:-

- Pre-Treatment Processes
- Anodising
- Zinc Processed
- Plating
- Hardening



Capacity - Slidinghead Machines

x6



STAR SV32

Six machines in total

11 axis machine, 32 mm maximum diameter, Long parts ejector, 10 station turret, Live tooling, Magazine bar feed, 6000 rpm

x2



STAR SR20 111

Two machines in total

20 mm maximum diameter, 16 tools, 4 spindles, 10,000 rpm spindle speed



CITIZEN C16

9 axis machine, 18 mm maximum diameter, Twin spindles, 16 tools, Live tooling, 10,000 rpm. Can run 24 hrs unmanned



CITIZEN B20

6 axis machine, 20 mm maximum diameter, Sub-spindle, Variable speed, Live tooling. Can run 24 hrs unmanned



STAR SA12

7 axis machine, 16 mm maximum diameter, Sub-spindle, Live tooling, Magazine bar feed. Can run 24 hrs unmanned



STAR SR-20J TYPE C

C-axis control machine, 20mm maximum diameter, 4- Spindle back working unit, 3-10 tooling, Magazine bar feed.

Capacity -Fixed-Head Machines



DOOSAN MX 2000

This machine has a maximum bar diameter of 400mm, a 10KW milling spindle, 42 position tool changer and runs at 10,000 rpm with bar feed.



NAKAMURA NTV3

This machine is a twin spindle, 3 turret, 36 driven tool, 72 turning tool CNC lathe complete with fully auto bar feed capable of feeding up to 42mm diameter bar



DOOSAN 2000 SY

Our 2000 SY has an 8" chuck, twin spindle, 12 turret, 65mm bar feed, C2 axis technology and runs at 5000 rpm.



YANG ML15A

This machine incorporates twin axis technology, 210 mm max machining diameter, 12 station turret, and is known for its high machining accuracy



BIGLIA 5014S

This 7 axis machine has a 210 mm maximum bar diameter and a 420 mm maximum bar length. There is a magazine bar loader to facilitate easy loading of bars and the machine also incorporates a 12 station turret, live tooling twin 7000 RPM spindles and can run 24 hours un-manned.



NAKAMURA NTRX 300

B-axis ATC Twin Spindle, Fusion between a 5-axis machining center and a lathe. Distance between centers max. 1350, 40 tools ATC, 250mm Y-axis stroke, 8000 Milling speed, 18.5kW Built-in tool spindle motor, Up to 30kW cutting power for turning shaft-work with synchronized spindles. Left Right spindle motor 15/11 KW, 230degree B-axis positioning range (± 225 degree)



NAKAMURA AS200 AY - FITTED WITH A HALTER ASSIST LOAD ROBOT

Single Turret Milling Turning Centre, Linear Guideways on all axes, ± 41 mm Y-axis, 15/11kW spindle motor, Spindle speed 4500min⁻¹, Driven-tool speed 6000min⁻¹, Faster rapid traverse 24m/min for the X-axis, and 36m/min for the Z-axis. Bar capacity 65mm standard. 8" Chuck, 5 station turret, Gearless Direct Belt Driven tools



MORI SEIKI NLX 2500 SY

The NLX 2500 is a high-rigidity, high-precision CNC lathe. Milling:- Turret equipped with BMT (Built-in Motor Turret), High-speed rotary tool spindle, 10,000 min⁻¹: Operability: Equipped with the digital tailstock, CELOS, MAPPS. High precision: Thoroughly controlled thermal displacement, High rigidity, box slideways are used for X / Y / Z axes

Capacity -CNC Milling Machines



CHIRON FZ12 KW

This machine incorporates twin pallets with rotary trunnions, a Microlock work holding system, Renishaw probing system, 48 tool magazine, high pressure coolant and a 15,000 rpm spindle.



CHIRON FZ12 W

This machine incorporates twin pallets with rotary trunnions, a Microlock work holding system, 20 tool magazine, a 12,000 rpm spindle.



YANG EAGLE 600

This machine has a 20 station Bi-Directional tool changer and 3 axis capability.



DAEWOO V600

This machine has a gearbox spindle, 32 position tool changer, through spindle coolantlines and swarf management systems. With a 22Kwatt motor making it ideal for armour



DMU 50

This is one of our latest machines with 5 axis simultaneous machining, swivel rotary table 12,000 rmp spindle and a 24 position tool changer, and probe inspection



ECO MILL 1100V

High speed with 4th Axis. This Machining centre can accommodate work pieces up to 1000 kg, ecoMill 1100 V with the traverse X-axis of 1100 mm, fitted with halter assist load robot



Halter Load Assist Robot

HALTER CNC Automation has incorporated the complex robotic technology into the most accessible solution for automation of batches from 10 to 1000 pieces. Teamed with our New Nakamura 200ASY, both working in harmony to provide flawless automated manufactured parts.

Inspection & Quality



MITUTOYO LINEAR

HEIGHT GAUGE 2D MEASURING GAUGE

Fitted with a Linear Height, multifunctional single axis height gauge, makes 2D measurement simple and accurate. It is possible to measure from simple 1D parameters of the surface height, circle diameter, distance, perpendicular and straightness to sophisticated 2D measurement.



SINOWON VB12 SHADOW GRAPH

VB 12 Series Profile Projector is a precise non-contact optical measuring instrument. Using a clever meld of optic, mechanic and computer technology it can be widely used in almost any industry for quality control purposes. The machine can inspect most surfaces and outlines of objects including complex threads, gear teeth and milling cutters



ZEISS PRISMO, REINSHAW MODUS 2

Zeiss Prismo CMM Machine fitted with Renishaw 5 axis CMM sensor technology. Using Modus 2 the innovative interface which is quicker to use and compatible with CAD CAM. This machine can perform from simple manual CMM operations through to complex part measurement on multi-axis systems.



DEA GLOBAL CLASSIC 500 X 500 CMM

All-purpose CMM for the dimensional inspection of a variety of components. It can be equipped with touch-trigger probes or optional scanning probes, which can be used in a number of industries for first and final part inspection and fixture qualification.

Rotec operates and is committed to a Total Quality Management System. With a dedicated Quality department, regular meetings and statistical analysis of our service, we strive to maintain our dedication to quality. As part of the Quality Management System Rotec has and is fully compliant with ISO 9001:2015 accreditation which is applicable to Precision CNC components produced by turning, milling and drilling in ferrous, non-ferrous and plastic based material.

“We are committed to ensuring that all parts are of the highest quality which meets and exceed customer requirements”

Our parts are quality tested and inspected by our highly trained Quality department using the latest testing equipment through the manufacturing process to ensure all parts meet not only the customers but also our high standards.

We always welcome customer feedback and suggestions as these enable us to continually improve our internal processes, services and quality. Click here to email us your feedback or if you would like further information on our Quality Management System and testing capabilities. Automotive industry is a major part of our portfolio, we regularly evaluate and work towards the automotive standards

We are also working towards gaining AS9000 with hope to be accredited in mid 2018.



Tool Making / Fixture Manufacture



Our tool shop is manned by 5 experienced tool makers who are long served within the engineering industry. Via a combination of Vertical, Horizontal Mills Lathes and Surface Grinders their is little that we can not manufacture for our customers.

FIXTURES

Our skilled in house designers create mechanical , pneumatic, hydraulics fixtures for welding, machining, assembly lines, and inspection.

SMALL BATCH- ONE OFF'S

Our tool makers work for a combination of design houses requiring one off components for the unique plant and machinery they are using.

Assembly / Stock Control / Fabrication

WELDING / BRAZING

Rotec is now able to offer its customers a one stop shop combining the flexibility of a fabrication shop with the precision of CNC engineering.

Our Lloyds approved coded welders are able to offer MIG /TIG welding on large or small items, working with Steel, Aluminium, and Stainless Steel.

In our dedicated Fabrication shop we also braze machined parts for clients, removing the need to track their parts through numerous third parties and reducing lead times.



ASSEMBLY

For many clients we provide a one stop shop providing them with a finished and assembled, tested product, allowing them to concentrate on their business and customers.

Via our established supply chain we are able to offer competitive prices to our customers while taking the stress off managing the stocks of parts and sub assemblies. This ensures our clients are receiving high quality parts for the best price.

STOCK HOLDING

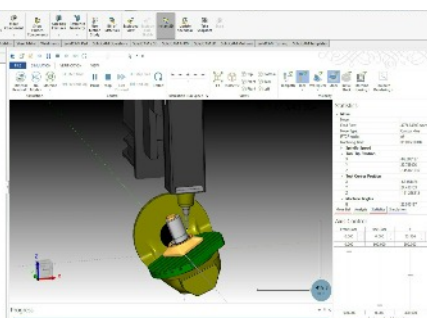
We like to develop long term relationships with our clients. One way we do this is to allow them to benefit from a better price for purchasing a larger quantity than they need at the point of order, then allowing them to call these parts off from us over 6 or 12 months.

For some customers we also provide a KANBAN service replenishing stock bins in line with their instructions.

CAD / CAM

CAD / DESIGN

Working with a variety of customers we find that we can support them by creating drawings that formalise their designs prior to machining. Or, for customers who have their own in house CAD engineers, we can seamlessly transfer information and add value to the design, advising on how the ease of manufacture, achieving efficient and economic Machining.



CAD / CAM

Extending our CAD capability we have invested in the latest software to allow us to work from a solid model quickly generating a CNC program, and with PC DIMOS generate CMM Inspection programmes.

Working from the customers original model removes the probability for errors and allows for the most complex parts to be handled quickly and efficiently.



ROTEC

Rotec Engineering Ltd

Enterprise Way, Evesham, WR11 1GS

Tel: 01386 424 111

Email: sales@rotec-ltd.com

www.rotec-ltd.com

SLIDINGHEAD

CNC MILLING

CNC TURNING

5 AXIS

FIXHEAD

CAD/CAM

JIGS & FIXTURES

FABRICATION

STOCK STORAGE

ROBOTIC AUTOMATION

24 HR PRODUCTION

NEXT DAY QUOTE

